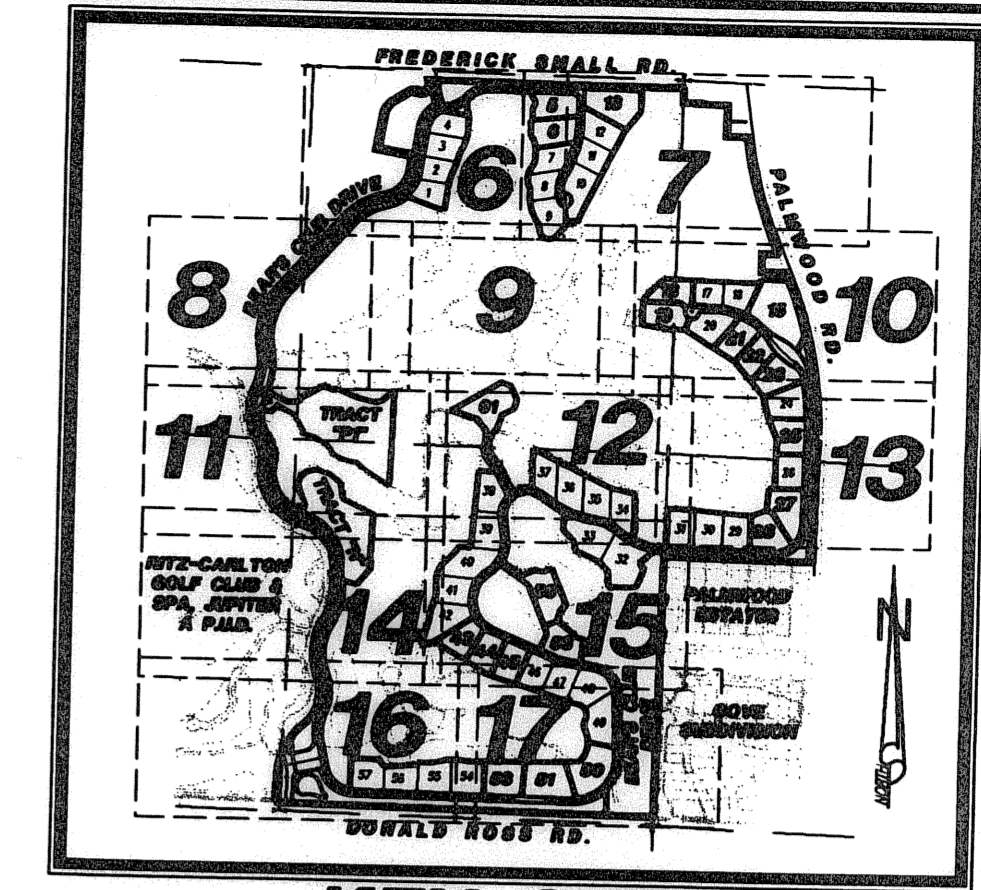


BEAR'S CLUB REPLAT, A P.U.D.

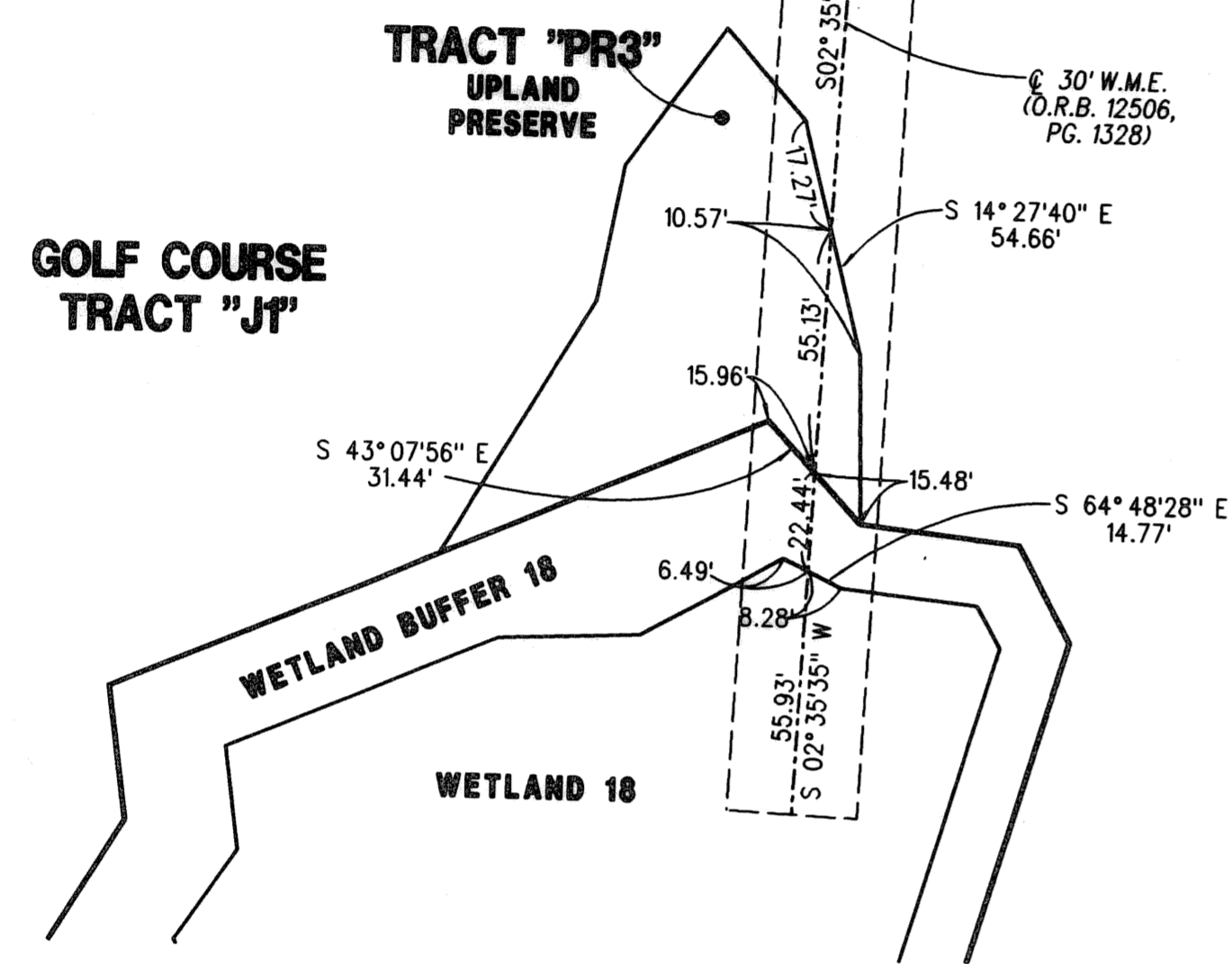
BEING A REPLAT OF A PORTION OF BEAR'S CLUB, A P.U.D.,
 AS RECORDED IN PLAT BOOK 86, PAGES 122 THROUGH 128,
 AND A PARCEL OF LAND DESCRIBED IN OFFICIAL RECORD BOOK 11237 PAGE 75,
 ALL IN THE PUBLIC RECORDS OF PALM BEACH COUNTY FLORIDA,
 LYING IN SECTIONS 19 & 20, TOWNSHIP 41 SOUTH, RANGE 43 EAST
 TOWN OF JUPITER, PALM BEACH COUNTY, FLORIDA

SHEET 18 OF 21 JULY 2005

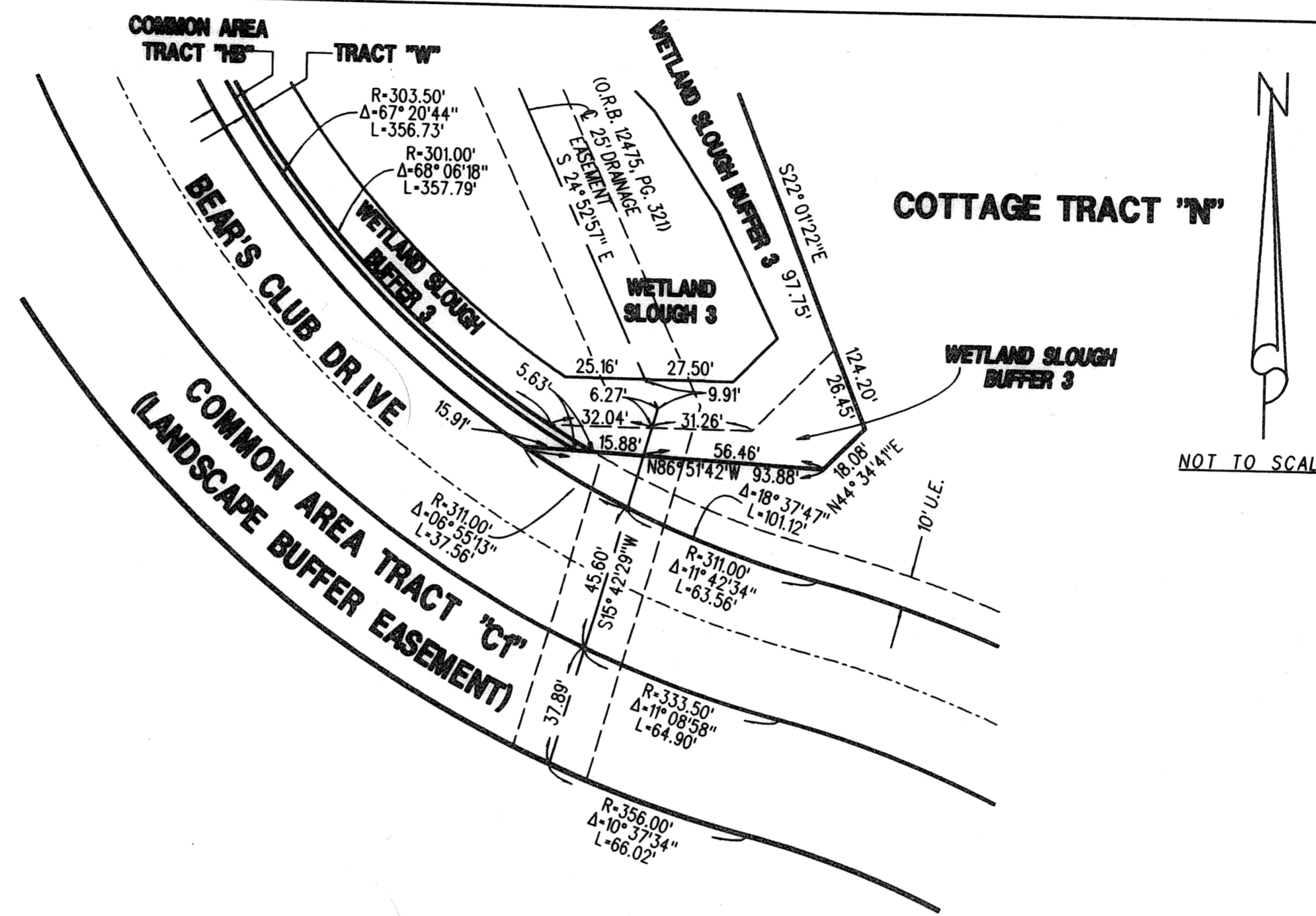


KEY SHEET

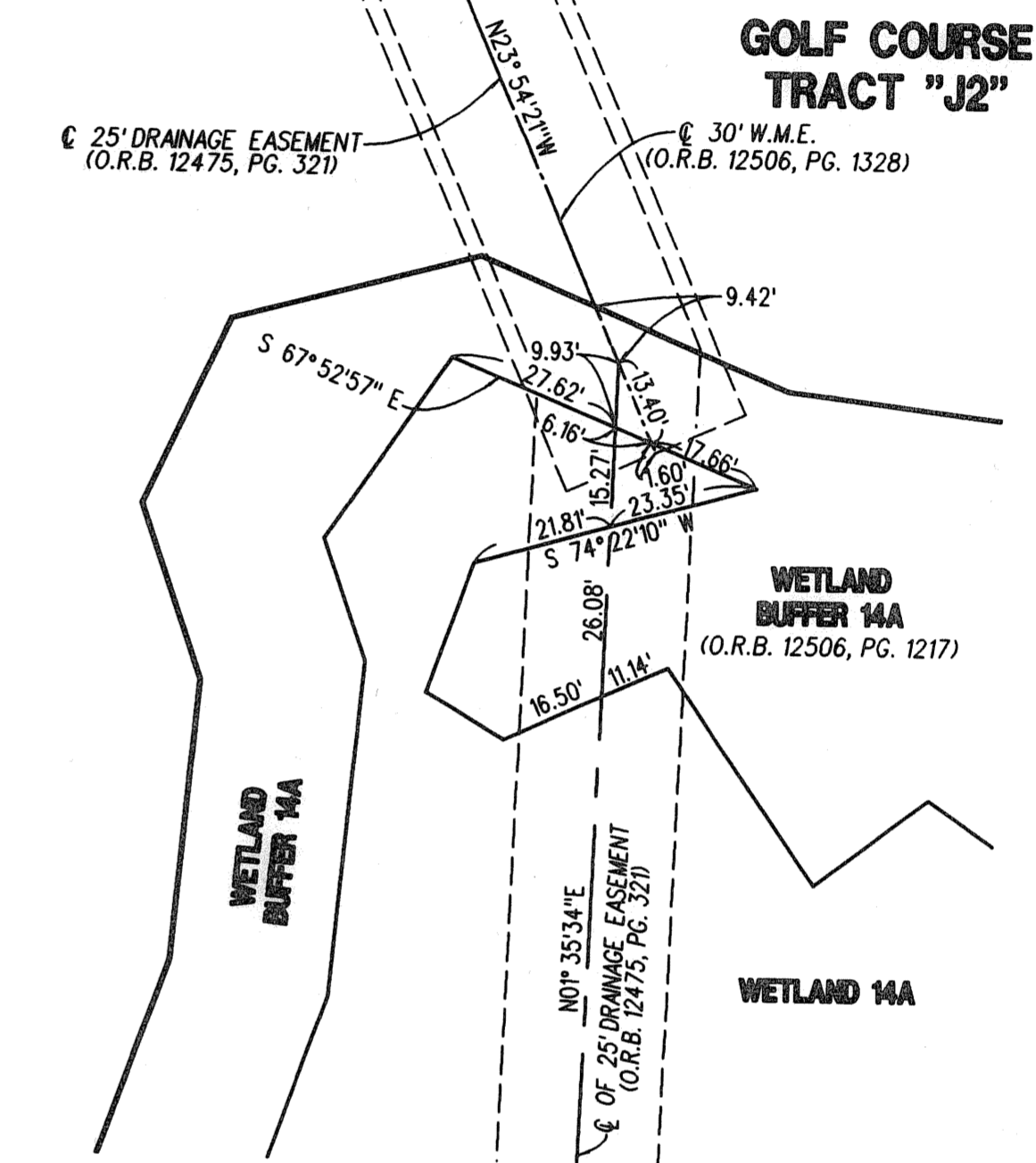
50



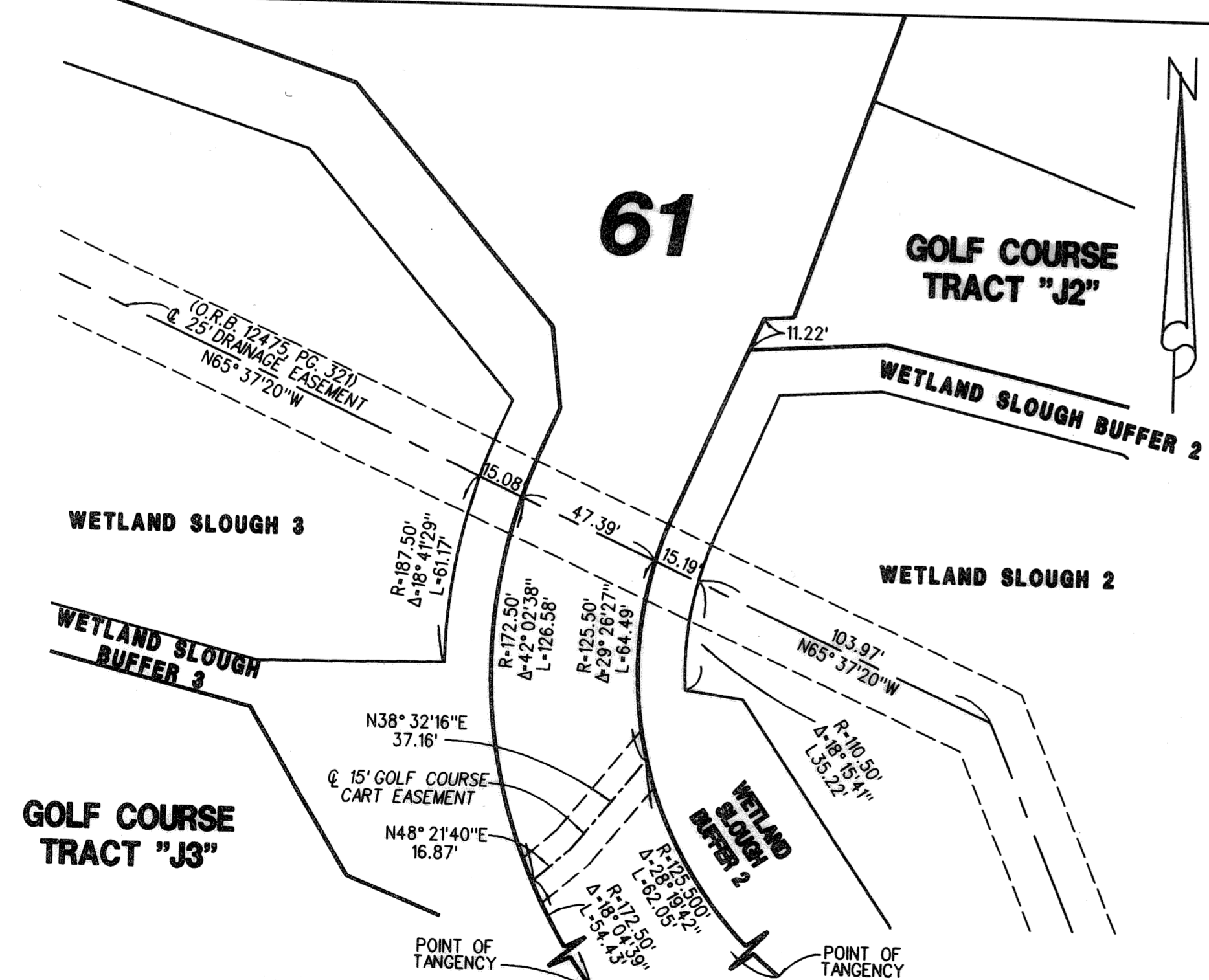
DETAIL "A" (SEE SHEET 9)



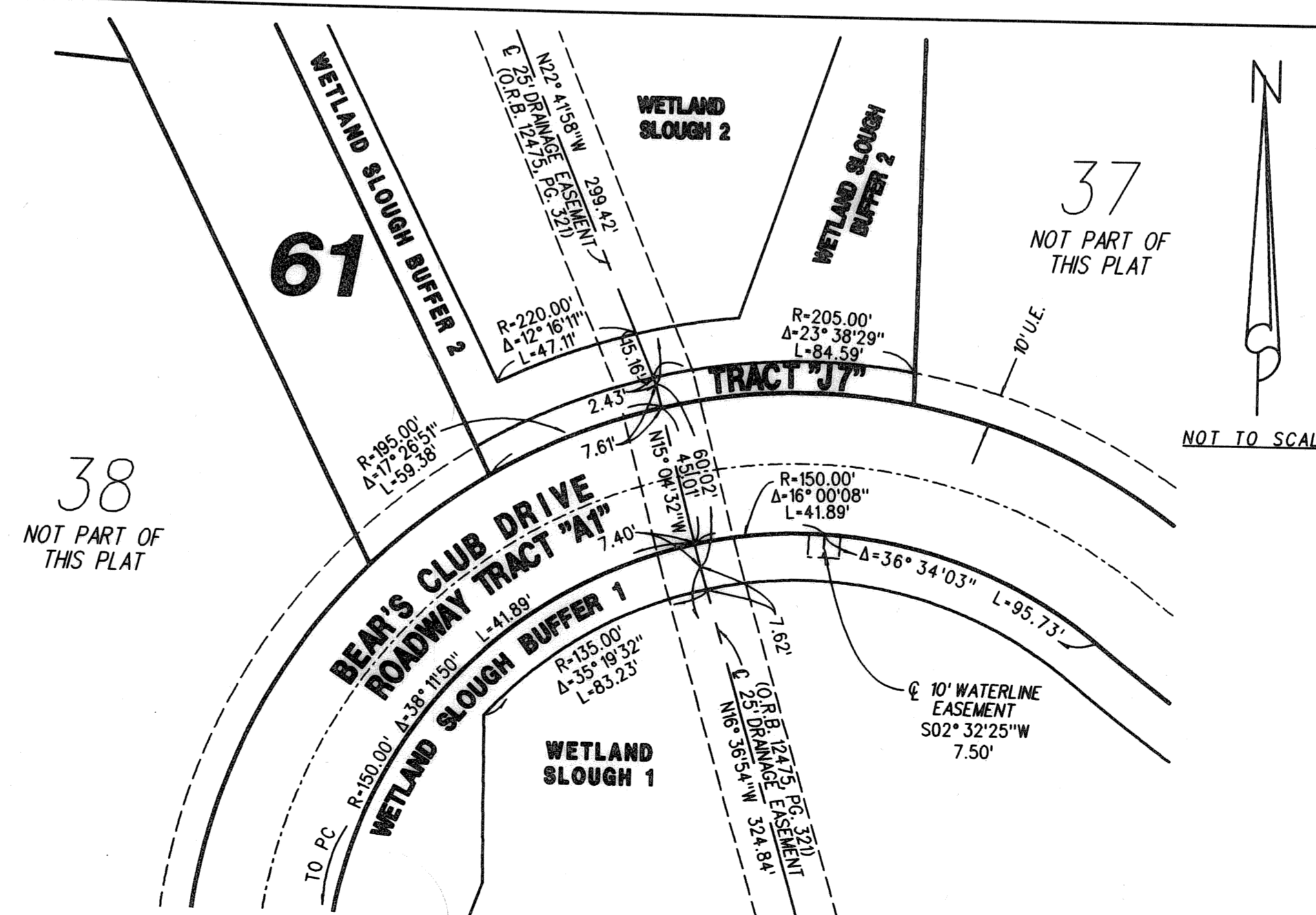
DETAIL "B" (SEE SHEET 11)



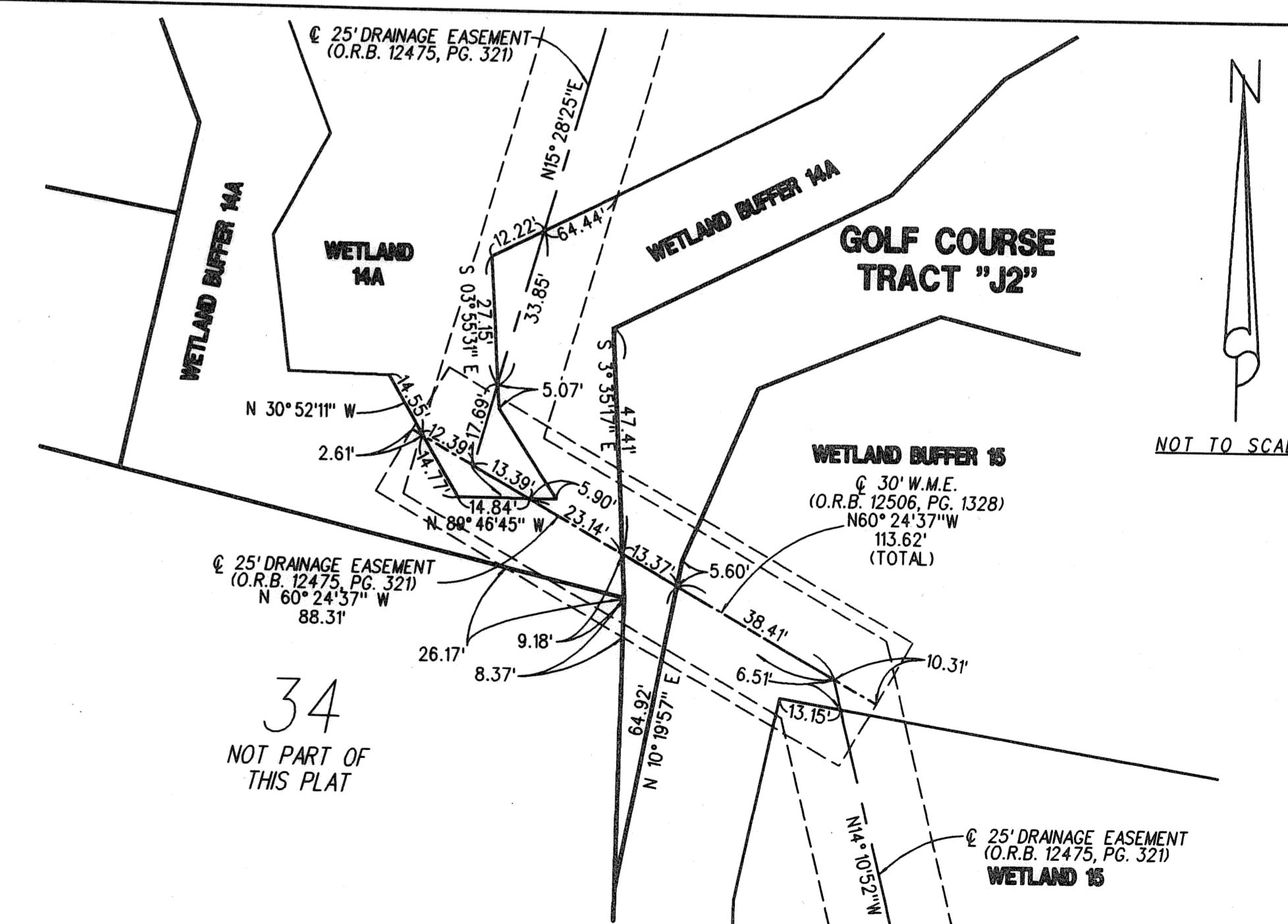
DETAIL "C" (SEE SHEET 12)



DETAIL "D" (SEE SHEET 12)



DETAIL "E" (SEE SHEET 12)



DETAIL "F" (SEE SHEET 12)

LIDBERG LAND SURVEYING, INC.

LB4431

675 West Indiantown Road, Suite 200,
 Jupiter, Florida 33458 TEL. 561-746-8454

CAD.	K:\UST\194143\BEARCLUB\2090306\SHEET17.DGN				
REF.	K:\UST\194143\BEARCLUB\2090306\2090306.DGN				
FLD.	B.D.	FB.	PG.	JOB	00-209-306
OFF.	R.W. & E.C.	DATE	JUNE 2005		
CKD.	D.C.L.	SHEET	18	OF	21
DWG.					000-209P